

SPECIFICATIONS

Electrical Ratings	100mA @ 30VDC
Electrical Life	100,000 cycles typical
Contact Resistance	< 50 mΩ initial
Actuation Force	180 +/- 50gF
Actuator Travel	1.5 mm to lock 2.5 mm full travel
Dielectric Strength	1000Vrms min
Insulation Resistance	> 100MΩ min
Operating Temperature	-40°C to 85°C
Storage Temperature	-40°C to 85°C



MATERIALS ←RoHS COMPLIANT

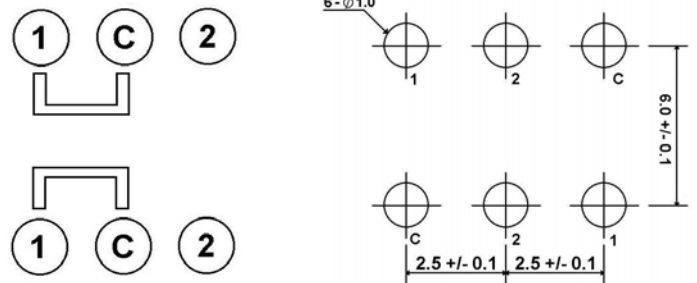
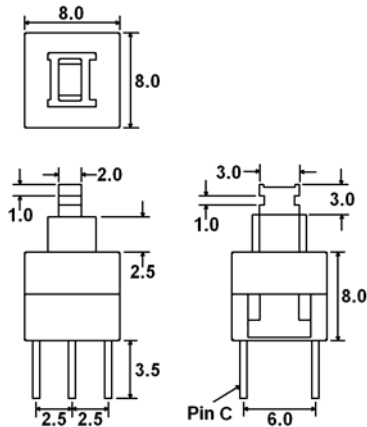
Actuator	Acetal
Housing	6/6 Nylon
Cover	Acetal
Latching Pin	Stainless Steel
Spring	Stainless Steel
Contacts	Phosphor Bronze, Silver Plated
Terminals	Brass, Silver Plated

ORDERING INFORMATION


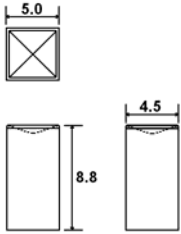

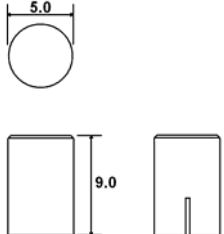

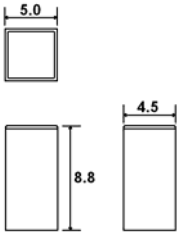
1. Series:	LP2202	F180	L	C022
LP2202				
2. Actuation Force:	F180 = 180gF			
3. Latching:	N = Non-latching L = Latching			
4. Cap Options:	Cap Colors:			
Blank = No Cap				
C01	**See Cap Options for color availability			
C02				
C03				

DIMENSIONS

SCHEMATIC & PC LAYOUT



CAP OPTIONS

  <p>C01_ 1 = White, 2 = Black, 3 = Red, 9 = Light Gray Contact Factory for other available colors</p>	  <p>C02_ 1 = White, 2 = Black, 3 = Red, 9 = Light Gray Contact Factory for other available colors</p>	  <p>C03_ 1 = White, 2 = Black, 3 = Red, 9 = Light Gray Contact Factory for other available colors</p>
--	--	--