



RoHS Compliant

## Specifications

Electrical Ratings	50mA @ 12VDC
Electrical Life	50,000 cycles typical
Contact Resistance	<500mΩ initial max
Actuation Force	180 ± 100gF
Actuator Travel	0.35 mm ± .10mm

Dielectric Strength	250Vrms min
Insulation Resistance	>100MΩ min @ 500VDC
Operating Temperature	-40°C to 85°C
Storage Temperature	-40°C to 85°C
Packaging Information	2,000 pieces per reel

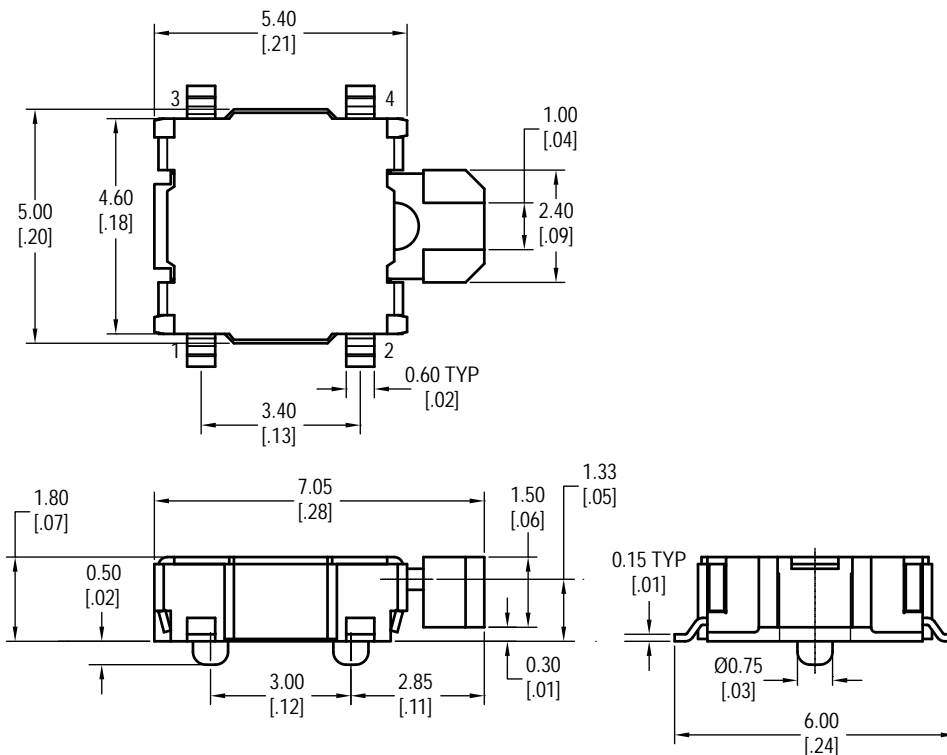
## Materials

Actuator	LCP
Housing	LCP
Cover	Stainless Steel
Contacts	Stainless Steel, Silver Clad
Terminals	Copper Alloy, Silver Plated

## Ordering Information

1. Series	CS1218	F180
CS1218		
2. Actuation Force	F180 = 180gF	

## Dimensions



## Schematic & PC Layout

