



RoHS Compliant

## Specifications

Electrical Ratings	50mA @ 48VDC
Electrical Life	100,000 cycles typical
Contact Resistance	<100mΩ initial
Actuation Force	160 ± 50gF
Actuation Travel	0.7 ± 0.2mm

Dielectric Strength	250Vrms min
Insulation Resistance	>100MΩ min
Operating Temperature	-40°C to 85°C
Storage Temperature	-40°C to 85°C
Sealing Degree	IP67

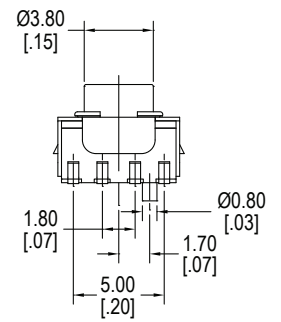
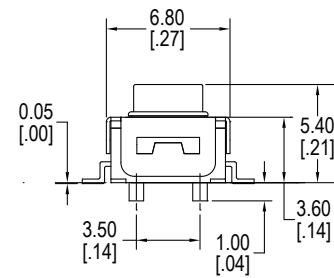
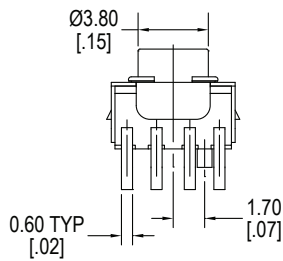
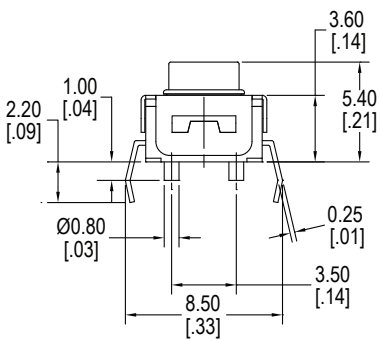
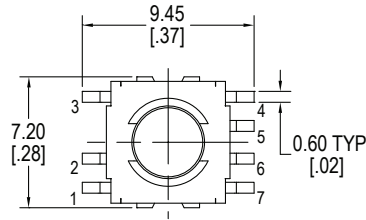
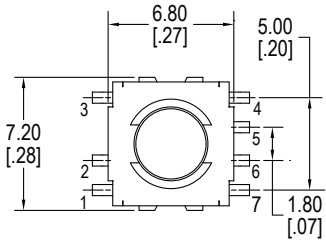
## Materials

Actuator	Silicone
Housing	PPA
Cover	Stainless Steel
Dome Contact	Stainless Steel, Silver Plated
Terminals	Brass, Silver Plated

## Ordering Information

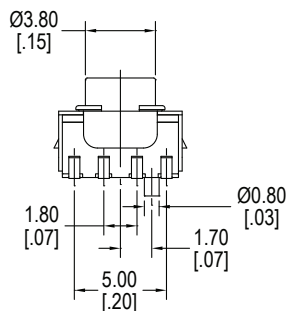
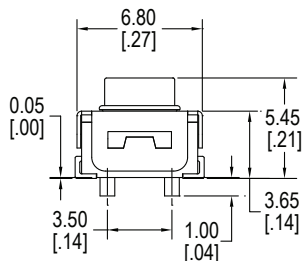
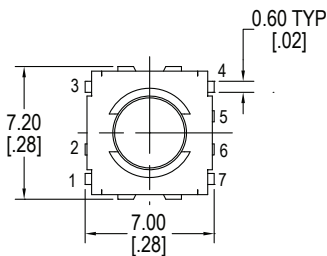
1. Series	CW	1.8	F160	RB	Q																																				
CW CWV = Right Angle CWS = SMD CWJ = SMD, J Lead CWSV = SMD, Right Angle																																									
2. Actuator Height	1.8 = 1.8mm																																								
3. Actuator Force	F160 = 160gF																																								
4. LED Color	<table border="0"> <tr> <td>R = Red</td> <td>RGB (not available with Right Angle terminals)</td> <td>GB = Green / Blue dual LED</td> </tr> <tr> <td>Y = Yellow</td> <td>RY = Red / Yellow dual LED</td> <td>GW = Green / White dual LED</td> </tr> <tr> <td>G = Green</td> <td>RG = Red / Green dual LED</td> <td>GA = Green / Amber dual LED</td> </tr> <tr> <td>B = Blue</td> <td>RB = Red / Blue dual LED</td> <td>BPG = Blue / Pure Green dual LED</td> </tr> <tr> <td>W = White</td> <td>RW = Red / White dual LED</td> <td>BA = Blue / Amber dual LED</td> </tr> <tr> <td>PG = Pure Green</td> <td>RPG = Red / Pure Green dual LED</td> <td>WA = White / Amber dual LED</td> </tr> <tr> <td>A = Amber</td> <td>RA = Red / Amber dual LED</td> <td>PGA = Pure Green / Amber dual LED</td> </tr> <tr> <td></td> <td>YG = Yellow / Green dual LED</td> <td></td> </tr> <tr> <td></td> <td>YB = Yellow / Blue dual LED</td> <td></td> </tr> <tr> <td></td> <td>YW = Yellow / White dual LED</td> <td></td> </tr> <tr> <td></td> <td>YPG = Yellow / Pure Green dual LED</td> <td></td> </tr> <tr> <td></td> <td>YA = Yellow / Amber dual LED</td> <td></td> </tr> </table>					R = Red	RGB (not available with Right Angle terminals)	GB = Green / Blue dual LED	Y = Yellow	RY = Red / Yellow dual LED	GW = Green / White dual LED	G = Green	RG = Red / Green dual LED	GA = Green / Amber dual LED	B = Blue	RB = Red / Blue dual LED	BPG = Blue / Pure Green dual LED	W = White	RW = Red / White dual LED	BA = Blue / Amber dual LED	PG = Pure Green	RPG = Red / Pure Green dual LED	WA = White / Amber dual LED	A = Amber	RA = Red / Amber dual LED	PGA = Pure Green / Amber dual LED		YG = Yellow / Green dual LED			YB = Yellow / Blue dual LED			YW = Yellow / White dual LED			YPG = Yellow / Pure Green dual LED			YA = Yellow / Amber dual LED	
R = Red	RGB (not available with Right Angle terminals)	GB = Green / Blue dual LED																																							
Y = Yellow	RY = Red / Yellow dual LED	GW = Green / White dual LED																																							
G = Green	RG = Red / Green dual LED	GA = Green / Amber dual LED																																							
B = Blue	RB = Red / Blue dual LED	BPG = Blue / Pure Green dual LED																																							
W = White	RW = Red / White dual LED	BA = Blue / Amber dual LED																																							
PG = Pure Green	RPG = Red / Pure Green dual LED	WA = White / Amber dual LED																																							
A = Amber	RA = Red / Amber dual LED	PGA = Pure Green / Amber dual LED																																							
	YG = Yellow / Green dual LED																																								
	YB = Yellow / Blue dual LED																																								
	YW = Yellow / White dual LED																																								
	YPG = Yellow / Pure Green dual LED																																								
	YA = Yellow / Amber dual LED																																								
5. Contact Plating	Q = Silver																																								

**Dimensions**

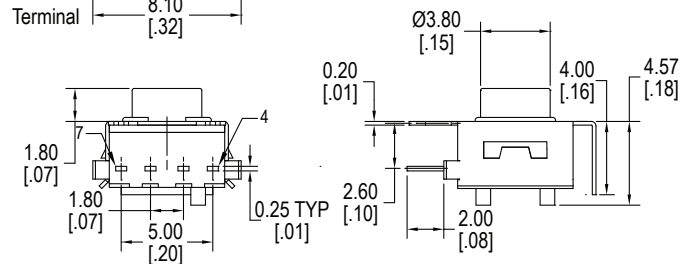
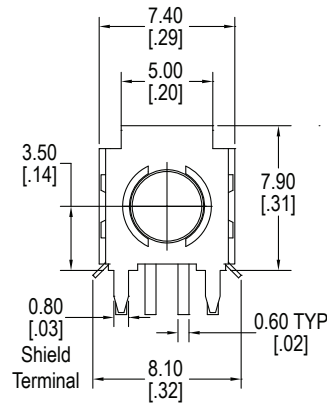


**Through-Hole**

**SMD Gull Wing**



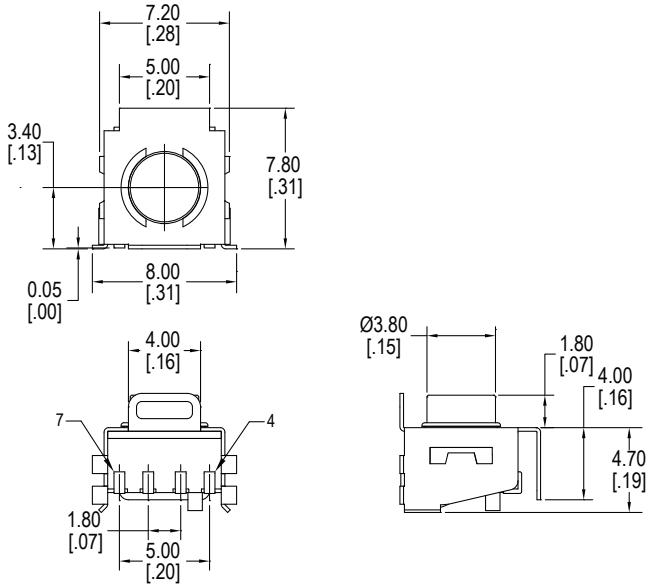
**SMD J Lead**



**Through-Hole Right Angle**

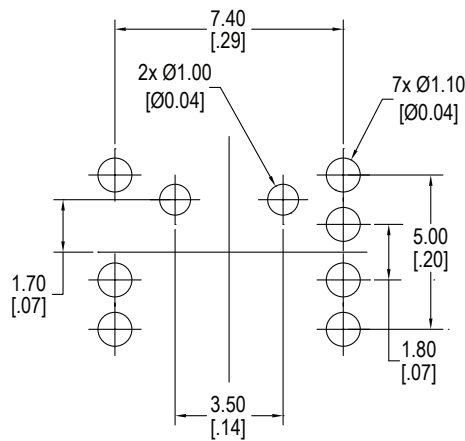


**Dimensions**

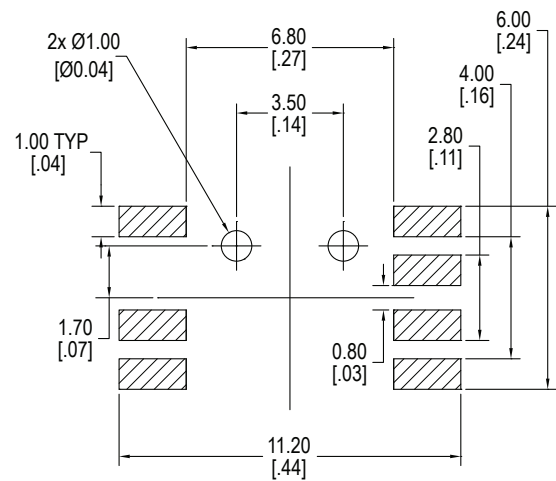


**SMD Right Angle**

**PC Layouts**

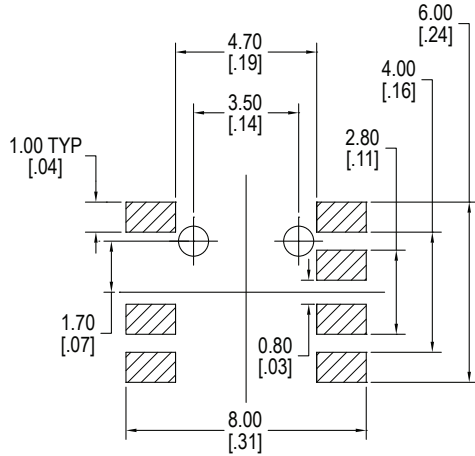


**Through-Hole**

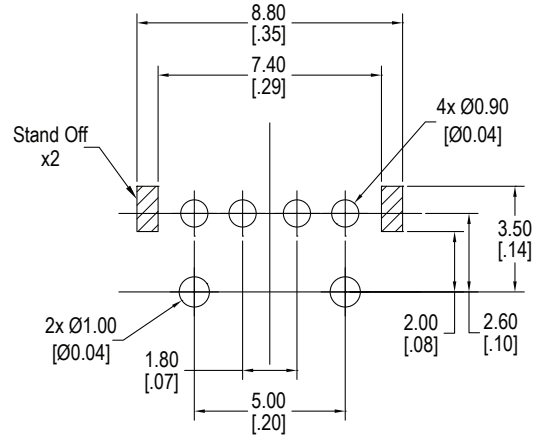


**SMD Gull Wing**

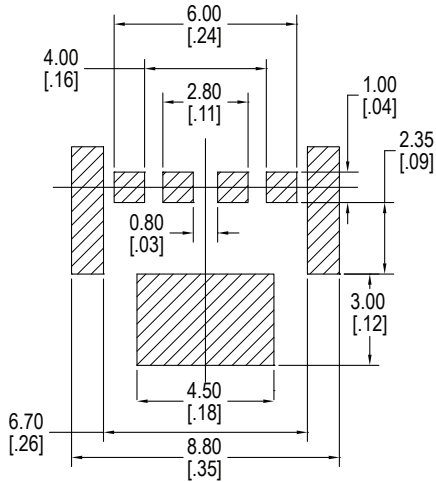
**PC Layouts**



**SMD J Lead**

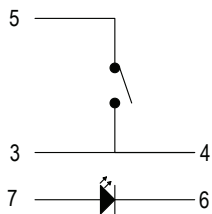


**Through-Hole Right Angle**

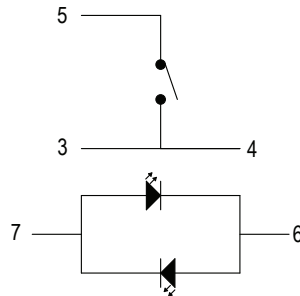


**SMD Right Angle**

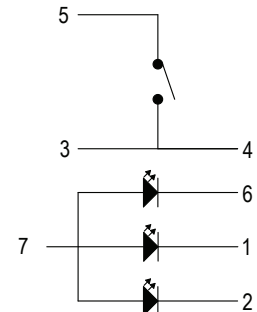
**Schematics**



**Single LED**



**Dual LED**



**RGB**