

Specifications

Electrical Ratings	See Contact Options	Operating Force	2 Pole: 350 ± 100gF
Electrical Life	100,000 cycles typical		4 Pole: 450 ± 100gF
Contact Resistance	<50mΩ initial @ 2-4VDC, 100mA		6 Pole: 550 ± 100gF
Dielectric Strength	2000Vrms min		8~10 Pole: 650 ± 150gF
Insulation Resistance	>100MΩ min	Operating Temperature	-20°C to 70°C
		Storage Temperature	-40°C to 85°C

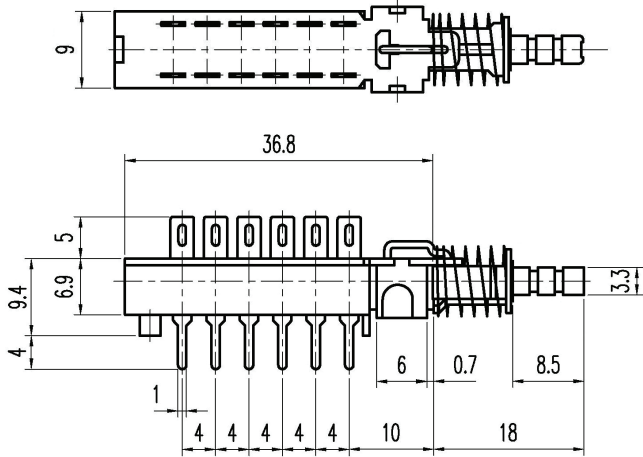
Materials

Actuator	POM
Housing	PC
Terminal Base	Phenolic
Contacts	Phosphor Bronze, Silver or Gold-Nickel Plated
Terminals	Brass, Silver or Gold-Nickel Plated
Chassis	Steel
Spring	Steel
Latching Pin	Steel

Ordering Information

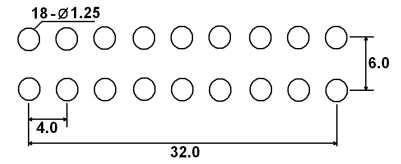
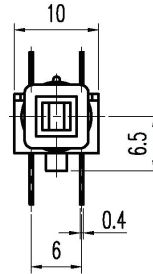
1. Series	DL	4	N	F	B	Q	C132
DL							
2. Number of Poles							
2 = DPDT							
4 = 4PDT							
6 = 6PDT							
8 = 8PDT							
10 = 10PDT							
**Stacking switch part numbers are:							
DL2LAQ/4LAQ							
DL2LAQ/6LAQ							
3. Actuation Force Options							
None = Standard Force							
4. Switch Function							
N = Non-latching							
L = Latching							
5. Terminal Options							
A, F, E, C, G							
6. Mounting Options							
Blank = No Chassis (standard)							
B = Mounting Chassis, single stage, 3.2mm dia mounting holes							
C = Mounting Chassis, single stage, M3x0.5 threaded mounting holes							
**Multi-Stage switch assembly part numbers assigned at factory							
7. Contact Material							
Q = Silver							
R = Gold							
6. Caps							
Blank = No Cap	C14	C19					Cap Colors
C11	C15	C20					**See Cap Options for color availability
C12	C16	C22					
C13	C18	C26					

Dimensions

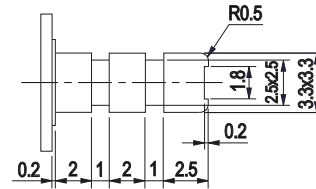
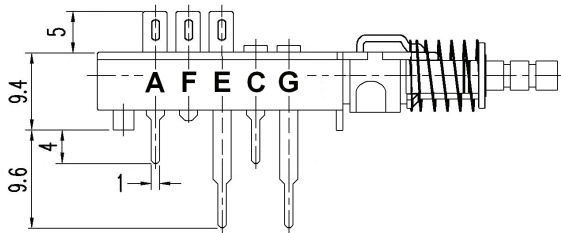


PC Layout

Number of Poles	"L" mm	"P" mm	"A" mm
2	24.8	6	8
4	36.8	12	16
6	48.8	18	24
8	60.8	24	32
10	72.8	30	40

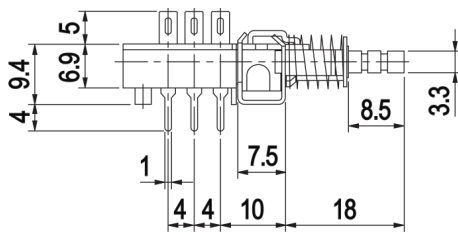


Terminal Options and Actuator Detail

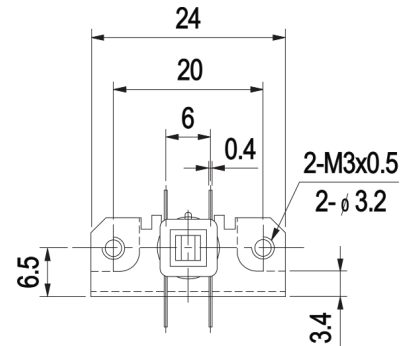


Mounting Options

B, 3.2mm mounting holes

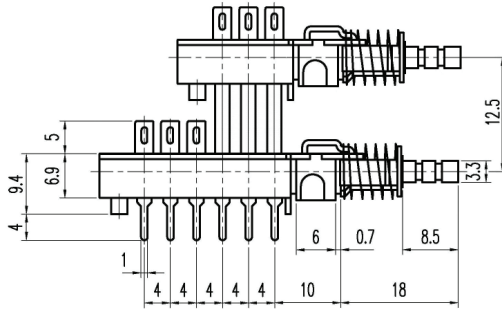


C, M3x0.5 mounting holes

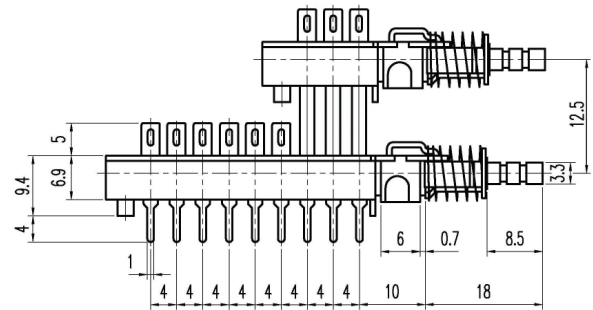


Stacking Switches

DL2LAQ/4LAQ



DL2LAQ/6LAQ

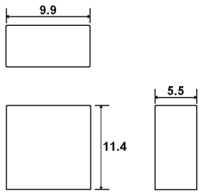


Contact Options

Designator	Contact Material	Terminal Material	Electrical Ratings
Q	Silver Plating	Silver Plating	500mA @ 120VAC, 1A @ 28VDC
R	Gold over Nickel Plating	Gold over Nickel Plating	0.4VA max @ 20VAC or VDC max

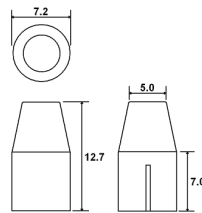
Cap Options Contact Factory for other available colors

C11_



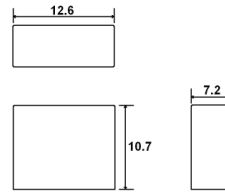
1 = White, 2 = Black, 3 = Red
9 = Light Gray

C12_



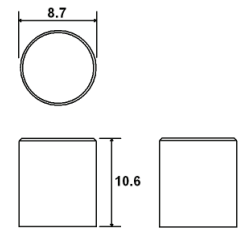
1 = White, 2 = Black, 3 = Red
9 = Light Gray

C13_



1 = White, 2 = Black, 3 = Red
9 = Light Gray

C14_

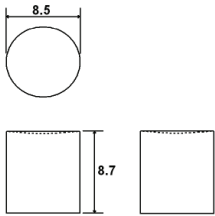


1 = White, 2 = Black, 3 = Red
9 = Light Gray

Horizontal Pushbutton

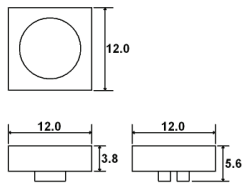
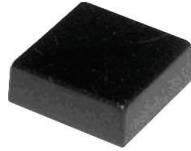
Cap Options Contact Factory for other available colors

C15_



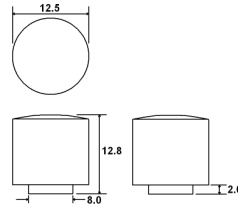
2 = Black, 0 = Clear

C16_



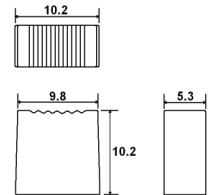
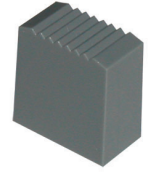
1 = White, 2 = Black
3 = Red, 7 = Blue

C18_



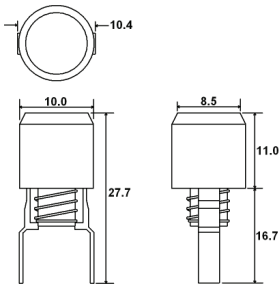
1 = White, 2 = Black
3 = Red, 9 = Light Gray

C19_



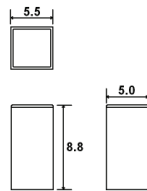
1 = White, 2 = Black
3 = Red, 8 = Dark Gray

C20_



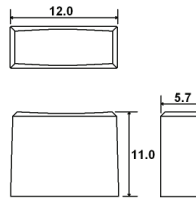
Housing Color
2 = Black, 9 = Light Gray
Indicator Color
1 = White, 4 = Yellow,
5 = Green, 7 = Blue

C22_



1 = White, 2 = Black
8 = Dark Gray, 9 = Light Gray

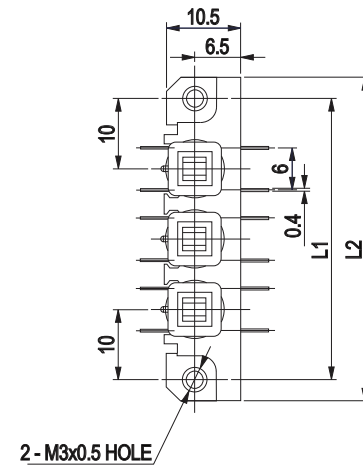
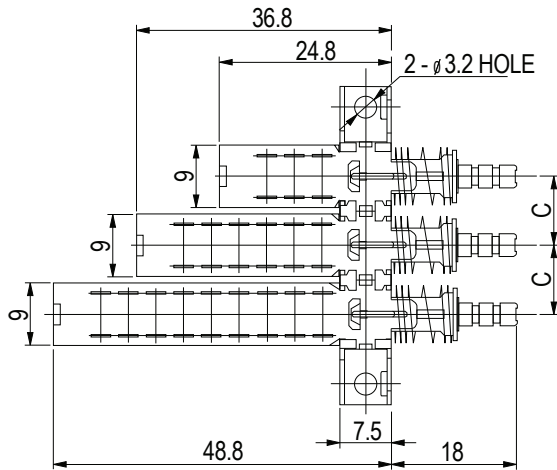
C26_



1 = White, 2 = Black
3 = Red, 9 = Light Gray

Multi-Stage Chassis

Part Numbers assigned at the factory



Bracket Length & Mounting Pitch

Pitch (C)	Number of Positions											
	1		2		3		4		5		6	
	L1	L2	L1	L2	L1	L2	L1	L2	L1	L2	L1	L2
10mm	18	24	30	36	40	46	50	56	60	66	70	76
12.5mm			32.5	38.5	45	51	57.5	63.5	70	76	82.5	88.5
15mm			35	41	50	56	65	71	80	86	95	101
17.5mm			37.5	43.5	55	61	72.5	78.5	90	96	107.5	113.5
20mm			40	46	60	66	80	86	100	106	120	126
25mm			45	51	70	76	95	101	120	126	145	151
30mm			50	56	80	86	110	116	140	146	170	176