

## Specifications

Electrical Ratings	100mA @ 30VDC	Dielectric Strength	1000Vrms min
Electrical Life	100,000 cycles typical	Insulation Resistance	>100MΩ min
Contact Resistance	<50mΩ initial	Operating Temperature	-40°C to 85°C
Actuation Force	180 ± 50gF	Storage Temperature	-40°C to 85°C
Actuator Travel	1.5mm to lock 2.5mm to full travel		

## Materials

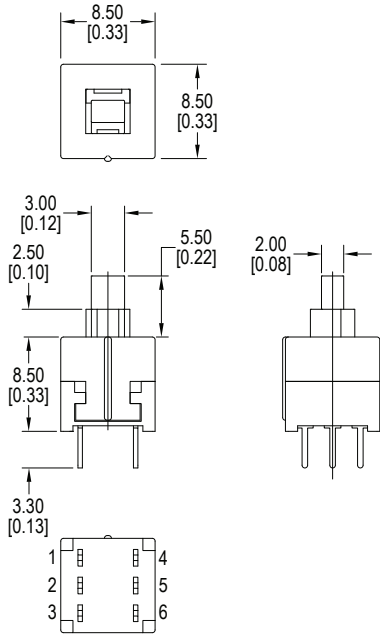
Actuator	Acetal
Housing	PBT
Cover	Acetal
Latching Pin	Stainless Steel
Spring	Stainless Steel
Contacts	Phosphor Bronze, Silver Plated
Terminals	Brass, Silver Plated

## Ordering Information

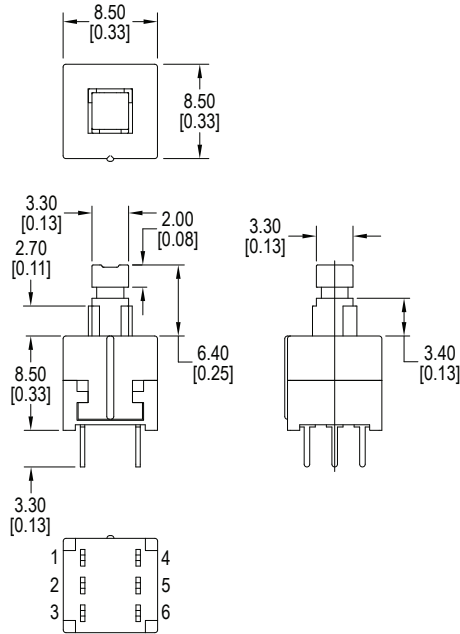
1. Series	LP2203	F180	N	Z	A																												
LP2203																																	
2. Actuation Force	F180 = F180gF																																
3. Latching	N = Non-Latching * Contact Factory for Latching Option																																
4. Actuation Options	X = 2mm x 3mm head Y = 3.3mm square head Z = 2.8mm square head																																
5. Termination	A = PC Pins, straight E = PC Pins with bend																																
6. Cap Options	<table border="0"> <tr> <td>Blank = No Cap</td> <td>C13</td> <td>Cap Colors:</td> <td></td> </tr> <tr> <td>C01</td> <td>C15</td> <td>See Cap Options for color availability</td> <td></td> </tr> <tr> <td>C02</td> <td>C16</td> <td>Caps available with Y &amp; Z actuators only</td> <td></td> </tr> <tr> <td>C03</td> <td>C18</td> <td></td> <td></td> </tr> <tr> <td>C04</td> <td>C22</td> <td></td> <td></td> </tr> <tr> <td>C05</td> <td>C26</td> <td></td> <td></td> </tr> <tr> <td>C12</td> <td></td> <td></td> <td></td> </tr> </table>					Blank = No Cap	C13	Cap Colors:		C01	C15	See Cap Options for color availability		C02	C16	Caps available with Y & Z actuators only		C03	C18			C04	C22			C05	C26			C12			
Blank = No Cap	C13	Cap Colors:																															
C01	C15	See Cap Options for color availability																															
C02	C16	Caps available with Y & Z actuators only																															
C03	C18																																
C04	C22																																
C05	C26																																
C12																																	

**Dimensions**

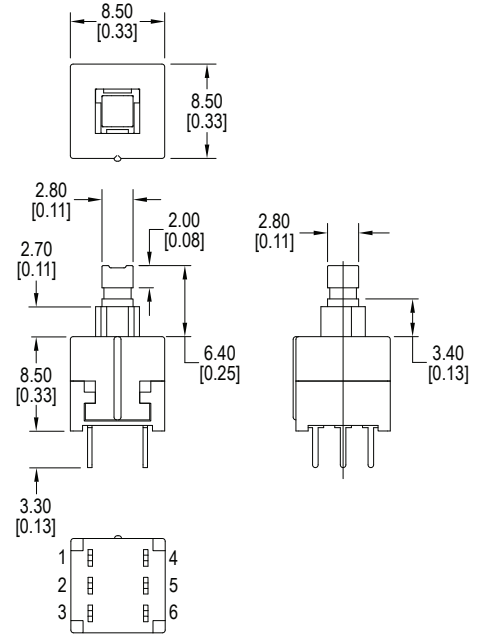
X, 2mm x 3mm



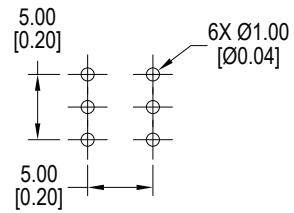
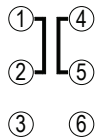
Y, 3.3mm square



Z, 2.8mm square

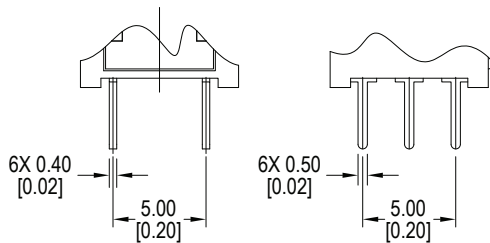


**Schematic & PC Layout**

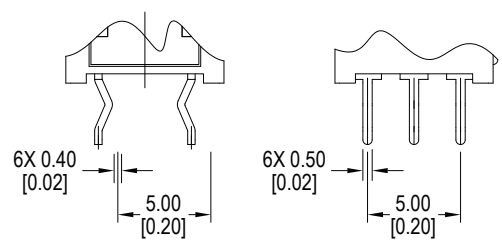


**Termination**

A, Straight PC Pins



E, PC Pins with Bend

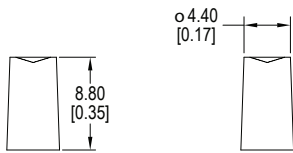
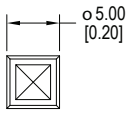


**Cap Options for Z Actuator** Contact Factory for other available colors

C01\_



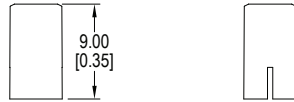
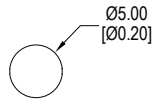
1 = White  
 2 = Black  
 3 = Red  
 9 = Light Gray



C02\_



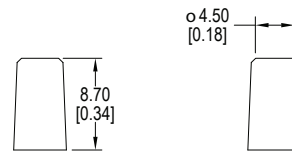
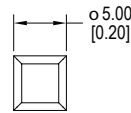
1 = White  
 2 = Black  
 3 = Red  
 9 = Light Gray



C03\_



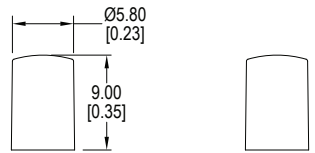
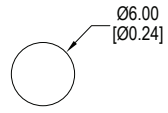
1 = White  
 2 = Black  
 3 = Red  
 9 = Light Gray



C04\_



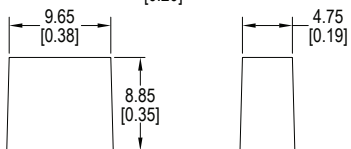
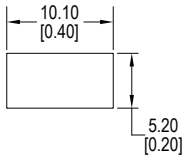
1 = White  
 2 = Black  
 3 = Red  
 9 = Light Gray



C05\_



1 = White  
 2 = Black  
 3 = Red  
 9 = Light Gray

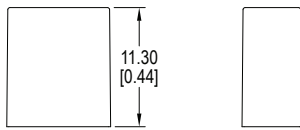
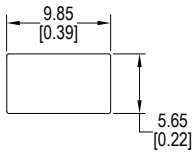


### Cap Options for Y Actuator Contact Factory for other available colors

C11\_



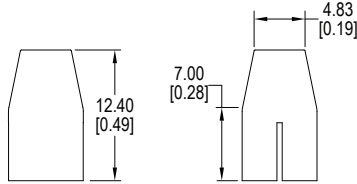
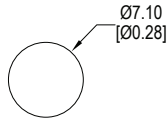
- 1 = White
- 2 = Black
- 3 = Red
- 9 = Light Gray



C12\_



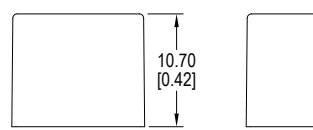
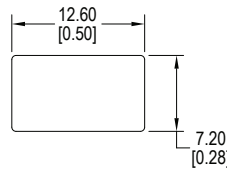
- 1 = White
- 2 = Black
- 3 = Red
- 9 = Light Gray



C13\_



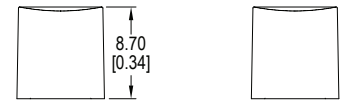
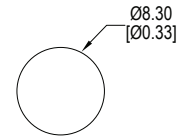
- 1 = White
- 2 = Black
- 3 = Red
- 9 = Light Gray



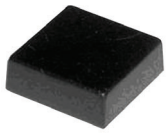
C15\_



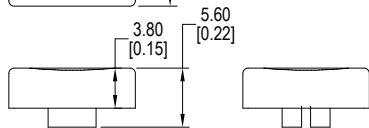
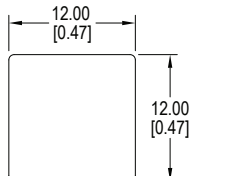
- 2 = Black
- 0 = Clear



C16\_

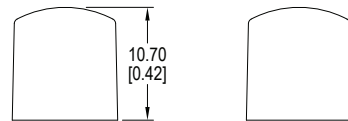
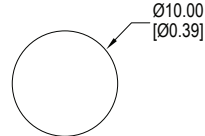


- 1 = White
- 2 = Black
- 3 = Red
- 7 = Blue



C17\_

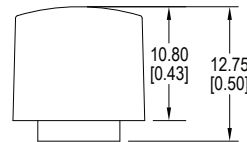
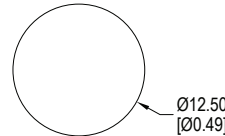
- 1 = White
- 2 = Black
- 9 = Light Gray



C18\_



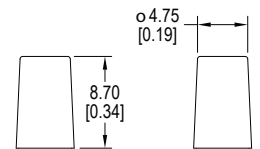
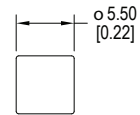
- 1 = White
- 2 = Black
- 9 = Light Gray



C22\_



- 2 = Black
- 8 = Dark Gray
- 9 = Light Gray



C26\_



- 1 = White
- 2 = Black
- 3 = Red
- 9 = Light Gray

