

Specifications

Electrical Ratings	100mA @ 30VDC	Dielectric Strength	1000Vrms min
Electrical Life	100,000 cycles typical	Insulation Resistance	>100MΩ min
Contact Resistance	<50mΩ initial	Operating Temperature	-40°C to 85°C
Actuation Force	260 ± 50gF	Storage Temperature	-40°C to 85°C
Actuator Travel	1.5mm to lock 2.5mm to full travel		

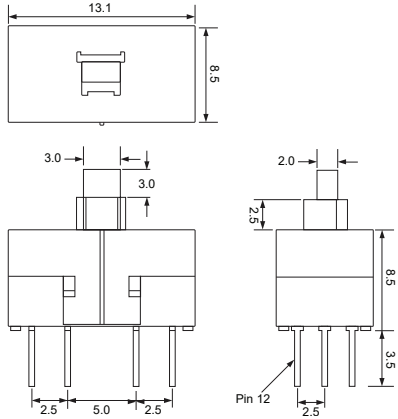
Materials

Actuator	Acetal
Housing	PBT
Cover	Acetal
Latching Pin	Stainless Steel
Spring	Stainless Steel
Contacts	Phosphor Bronze, Silver Plated
Terminals	Brass, Silver Plated

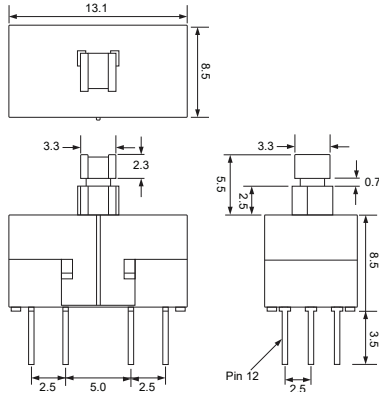
Ordering Information

1. Series	LP4203	F260	L	Z	A																																				
LP4203																																									
2. Actuation Force	F260 = F260gF																																								
3. Latching	N = Non-Latching * Contact Factory for Latching Option																																								
4. Actuation Options	X = 2mm x 3mm head Y = 3.3mm square head Z = 2.8mm square head																																								
5. Termination	A = PC Pins, straight E = PC Pins with bend																																								
6. Cap Options	<table border="0"> <tr> <td>Blank = No Cap</td> <td></td> <td></td> <td></td> <td></td> <td></td> </tr> <tr> <td>C01</td> <td>C11</td> <td>C17</td> <td></td> <td></td> <td></td> </tr> <tr> <td>C02</td> <td>C12</td> <td>C18</td> <td></td> <td></td> <td></td> </tr> <tr> <td>C03</td> <td>C13</td> <td>C19</td> <td></td> <td></td> <td></td> </tr> <tr> <td>C04</td> <td>C15</td> <td>C22</td> <td></td> <td></td> <td></td> </tr> <tr> <td>C05</td> <td>C16</td> <td>C26</td> <td></td> <td></td> <td></td> </tr> </table>					Blank = No Cap						C01	C11	C17				C02	C12	C18				C03	C13	C19				C04	C15	C22				C05	C16	C26			
Blank = No Cap																																									
C01	C11	C17																																							
C02	C12	C18																																							
C03	C13	C19																																							
C04	C15	C22																																							
C05	C16	C26																																							
	Cap Colors: ** See Cap Options for color availability ** Caps available with Y & Z actuators only																																								

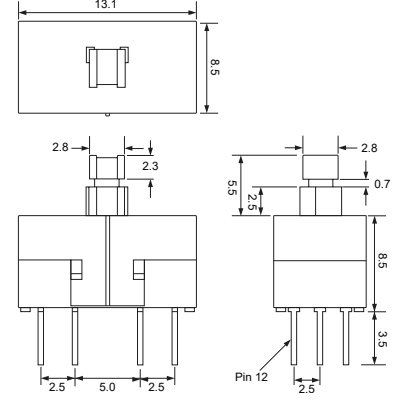
Dimensions



X

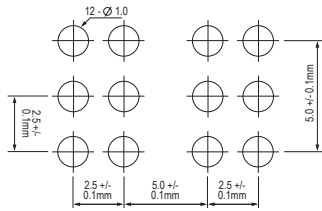
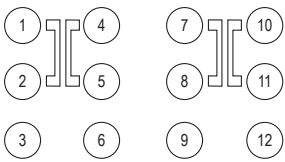


Y



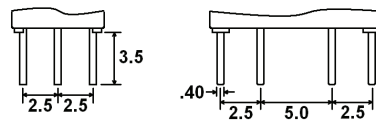
Z

Schematic & PC Layout

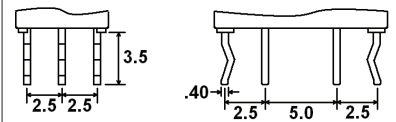


Termination

A, Straight PC Pins

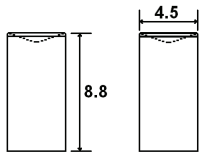


E, PC Pins with Bend



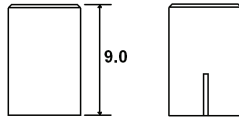
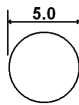
Cap Options for Z Actuator Contact Factory for other available colors

C01_



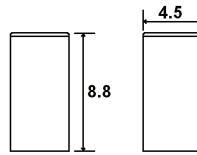
1 = White, 2 = Black
3 = Red, 9 = Light Gray

C02_



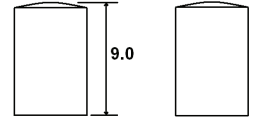
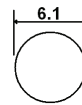
1 = White, 2 = Black
3 = Red, 9 = Light Gray

C03_



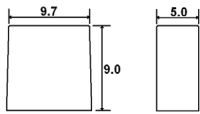
1 = White, 2 = Black
3 = Red, 9 = Light Gray

C04_



1 = White, 2 = Black
3 = Red, 9 = Light Gray

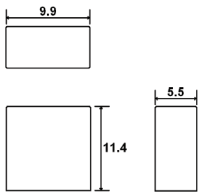
C05_



1 = White, 2 = Black
3 = Red, 9 = Light Gray

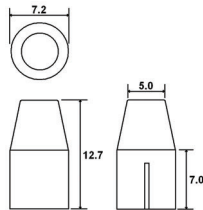
Cap Options for Y Actuator Contact Factory for other available colors

C11_



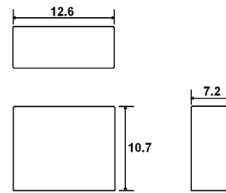
1 = White, 2 = Black
3 = Red, 9 = Light Gray

C12_



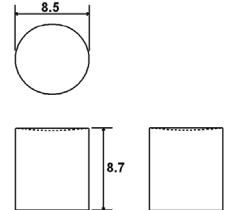
1 = White, 2 = Black
3 = Red, 9 = Light Gray

C13_



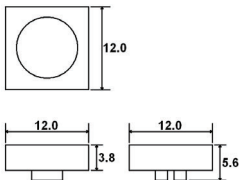
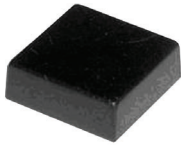
1 = White, 2 = Black
3 = Red, 9 = Light Gray

C15_



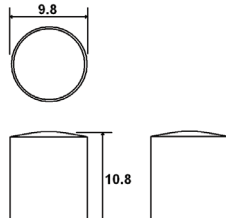
2 = Black, 0 = Clear

C16_



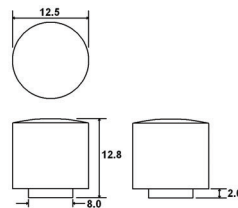
1 = White, 2 = Black
3 = Red, 7 = Blue

C17_



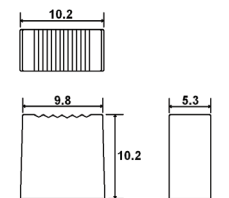
2 = Black, 0 = Clear

C18_



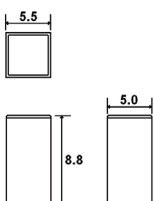
1 = White, 2 = Black
9 = Light Gray

C19_



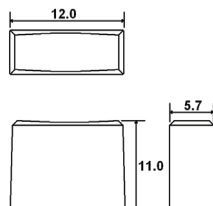
1 = White, 2 = Black
3 = Red, 8 = Dark Gray

C22_



2 = Black, 8 = Dark Gray
9 = Light Gray

C26_



1 = White, 2 = Black
3 = Red, 9 = Light Gray