



## Specifications

Electrical Ratings	UL61058-1 20A@125VAC, General Purpose, T105/55 16A@250VAC, General Purpose, T105/55 1hp@250VAC; 3/4hp@125VAC	Actuation Forces	500 ± 200gF
Electrical Life	10,000 cycles, typical	Dielectric Strength	1500Vrms min. @sea level, contact to contact
Contact Resistance	≤ 50mΩ initial	Insulation Resistance	≥ 1000MΩ min
		Operating Temperature	-40°C to +85°C
		Storage Temperature	-40°C to +85°C
		Sealing Degree	IP40

## Materials

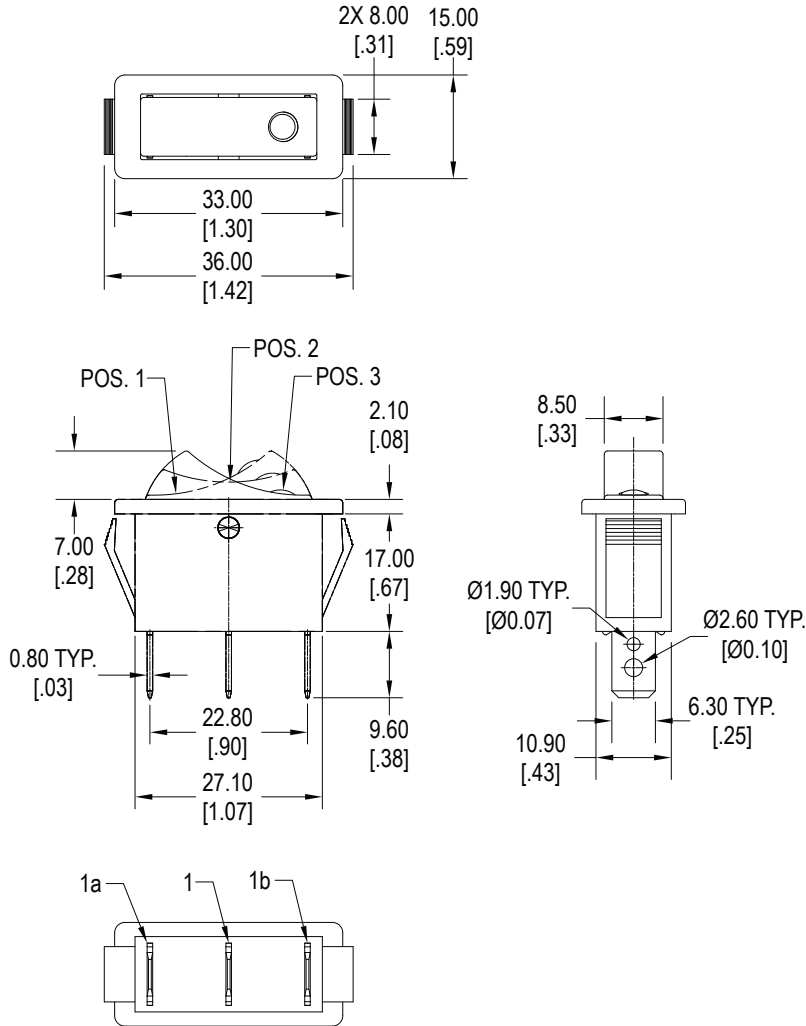
Actuator	Polycarbonate (PC) or 6/6 Nylon
Housing	6/6 Nylon
Terminals	Copper Alloy, Silver Plated
Contacts	Silver Alloy
Internal Armature	Copper Alloy

## Ordering Information

1. Series	RN	1	2	2	D	W	C	R12																
2. Switch Function	<ul style="list-style-type: none"> <li>1* = OFF - NONE - ON</li> <li>2 = OFF - NONE - (ON)</li> <li>3 = (OFF) - NONE - ON</li> <li>4 = ON - NONE - ON</li> <li>5 = ON - NONE - (ON)</li> <li>6 = ON - OFF - ON</li> <li>7 = (ON) - OFF - (ON)</li> <li>8 = ON - OFF - (ON)</li> </ul> <p><i>*illumination only available with this function</i></p>																							
3. Housing Color	<ul style="list-style-type: none"> <li>1 = White</li> <li>2 = Black, standard</li> <li>9 = Gray</li> </ul>																							
4. Actuator Color	<ul style="list-style-type: none"> <li>1 = White</li> <li>2 = Black</li> <li>3 = Red</li> <li>6 = Orange</li> <li>9 = Gray</li> <li>3T = Red Transparent</li> <li>4T = Yellow Transparent</li> <li>5T = Green Transparent</li> <li>7T = Blue Transparent</li> <li>2L = Black with Transparent Lens</li> </ul>																							
5. Marking	<table border="0"> <tr> <td>A</td> <td>D</td> <td>G</td> <td>J</td> </tr> <tr> <td>B</td> <td>E</td> <td>H</td> <td>K</td> </tr> <tr> <td>C</td> <td>F</td> <td>I</td> <td></td> </tr> </table>								A	D	G	J	B	E	H	K	C	F	I					
A	D	G	J																					
B	E	H	K																					
C	F	I																						
6. Actuator Marking Color	<ul style="list-style-type: none"> <li>A = No Marking</li> <li>B = Black</li> <li>W = White</li> <li>R = Red</li> </ul>																							
7. Terminal Style	C = .250" Quick Connect / Solder Lug																							
8. Lamp Option	<table border="0"> <tr> <td>Blank = Non-illuminated</td> <td>R12 = Red LED 12V</td> <td>G12 = Green LED 12V</td> <td>W12 = White LED 12V</td> </tr> <tr> <td>N1 = 125VAC Neon Lamp</td> <td>R24 = Red LED 24V</td> <td>G24 = Green LED 24V</td> <td>W24 = White LED 24V</td> </tr> <tr> <td>N2 = 250VAC Neon Lamp</td> <td>Y12 = Yellow LED 12V</td> <td>B12 = Blue LED 12V</td> <td></td> </tr> <tr> <td></td> <td>Y24 = Yellow LED 24V</td> <td>B24 = Blue LED 24V</td> <td></td> </tr> </table>								Blank = Non-illuminated	R12 = Red LED 12V	G12 = Green LED 12V	W12 = White LED 12V	N1 = 125VAC Neon Lamp	R24 = Red LED 24V	G24 = Green LED 24V	W24 = White LED 24V	N2 = 250VAC Neon Lamp	Y12 = Yellow LED 12V	B12 = Blue LED 12V			Y24 = Yellow LED 24V	B24 = Blue LED 24V	
Blank = Non-illuminated	R12 = Red LED 12V	G12 = Green LED 12V	W12 = White LED 12V																					
N1 = 125VAC Neon Lamp	R24 = Red LED 24V	G24 = Green LED 24V	W24 = White LED 24V																					
N2 = 250VAC Neon Lamp	Y12 = Yellow LED 12V	B12 = Blue LED 12V																						
	Y24 = Yellow LED 24V	B24 = Blue LED 24V																						

# Illuminated Rocker

## Dimensions

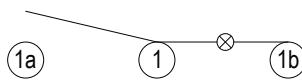


Function	Rocker Position		
1*	OFF	NONE	ON
2	OFF	NONE	(ON)
3	(OFF)	NONE	ON
Terminals	—	—	1 ~ 1a
4	ON	NONE	ON
5	ON	NON	(ON)
6	ON	OFF	ON
7	(ON)	OFF	(ON)
8	ON	OFF	(ON)
Terminals	1 ~ 1b	—	1 ~ 1a

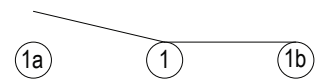
## Schematic & Panel Cut Out



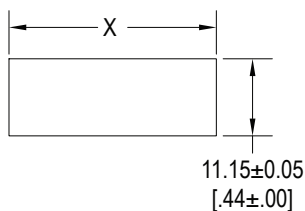
**SPST Non-Illuminated**



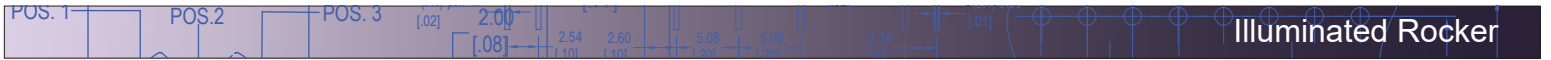
**SPST Illuminated**



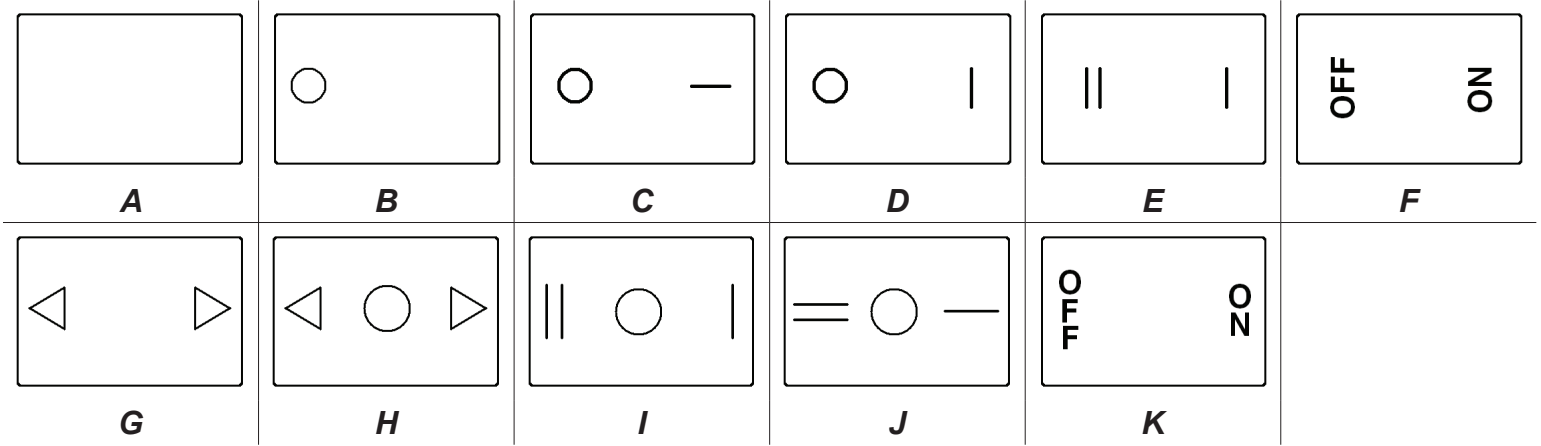
**SPDT Non-Illuminated**



Panel Thickness	X
0.70 ~ 1.25	29.60 ~ 29.70
1.25 ~ 2.00	30.10 ~ 30.20
2.00 ~ 3.00	30.45 ~ 30.55



## Actuator Marking Options



## LED Characteristics

LED Ratings		Color					Units
		R	Y	G	B	W	
Reverse Voltage	$V_R$	5	5	5	5	5	V
Forward Current (avg)	$I_F$	30	30	30	30	30	mA
Reverse Current $V_R = 5V$	$I_R$	10	10	10	10	10	$\mu A$
Power Dissipation	$P_T$	56	56	46	72	76	mW
Operating & Storage Temperature	$T_A$	-40 ~ +85					C°
Forward Voltage (min) $I_F = 20mA$	$V_F$	1.7	1.7	1.8	2.8	2.8	V
Forward Voltage (max) $I_F = 20mA$	$V_F$	2.4	2.4	2.4	3.4	3.4	V
Wavelength (min) $I_F = 20mA$	$\lambda_d$	620	585	565	460	n/a	nm
Wavelength (max) $I_F = 20mA$	$\lambda_d$	630	595	575	470	n/a	nm
Luminous Intensity, $I_F = 20mA$	LI	50	150	30	140	500	mcd
Viewing Angle	$\Theta$	50	50	70	120	70	deg