



LED Illuminated Round Rocker

Specifications

| | | | |
|--------------------|------------------------------|-----------------------|----------------|
| Switch Function | SPST | Contact Resistance | ≤ 50mΩ initial |
| Electrical Ratings | UL 61058-1 | Dielectric Strength | 1500Vrms min |
| | 15A @ 125VAC General Purpose | Insulation Resistance | ≥ 100MΩ min |
| | 10A @ 250VAC General Purpose | Operating Temperature | -20°C to +70°C |
| Electrical Life | 10,000 cycles typical | Storage Temperature | -20°C to +70°C |
| | | Sealing Degree | IP40 |

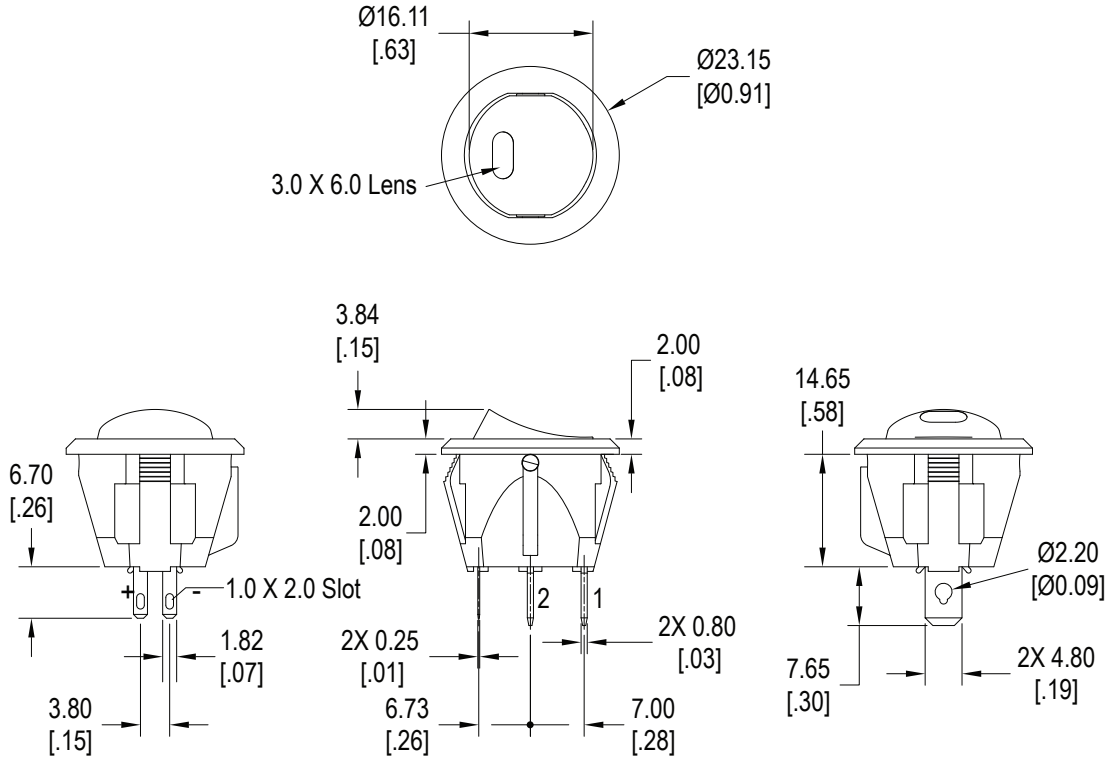
Materials




| | |
|---------------|----------------------|
| Housing | 6/6 Nylon |
| Actuator | 6/6 Nylon |
| Actuator Lens | Polycarbonate (PC) |
| Contacts | Silver Alloy |
| Terminals | Brass, Silver Plated |

Ordering Information

| | | | | | | | | | |
|---|-----|---|---|---|---|----|---|---|----|
| 1. Series | RR2 | 1 | 1 | 2 | 2 | 3T | C | R | 12 |
| RR2 | | | | | | | | | |
| 2. Number of Poles 1 = Single Pole | | | | | | | | | |
| 3. Switch Function 1 = OFF - ON | | | | | | | | | |
| 4. Housing Color 1 = White 2 = Black 9 = Gray | | | | | | | | | |
| 5. Actuator Colors 1 = White 2 = Black 3 = Red 4 = Yellow 5 = Green 6 = Orange 7 = Blue 8 = Purple 9 = Gray | | | | | | | | | |
| 6. Lens Colors 0T = Clear (Transparent) 3T = Red (Transparent) 4T = Yellow (Transparent) 5T = Green (Transparent) 7T = Blue (Transparent) | | | | | | | | | |
| 7. Terminal Option C = .187" Quick Connect / Solder Lug | | | | | | | | | |
| 8. LED Colors R = Red G = Green Y = Yellow B = Blue PG = Pure Green W = White RY = Red/Yellow dual LED RG = Red/Green dual LED RB = Red/Blue dual LED YG = Yellow/Green dual LED YB = Yellow/Blue dual LED GB = Green/Blue dual LED | | | | | | | | | |
| 9. LED Voltage Option Blank = No internal resistor 12 = 12V 24 = 24V | | | | | | | | | |

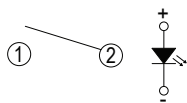
Dimensions



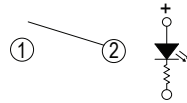
| |  |  |  |
|-----------|---|---|---|
| Function | Position 1 | Position 2 | Position 3 |
| 1 | OFF | NONE | ON |
| Terminals | — | — | 2 ~ 1 |

Schematics

No Internal Resistor

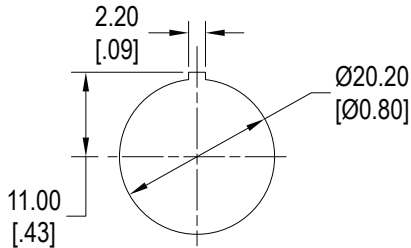


Internal Resistor



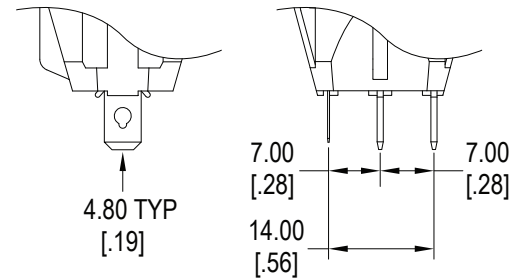
Panel Cut Out

Panel cut out material thickness : 0.8mm ~ 3.0mm



Terminal Options

C



LED Characteristics

| LED Ratings | | Color | | | | | | | Units |
|---|-----------------|-----------|-----|-----|-----|-----|-----|---------|-------|
| | | R | Y | G | B | PG | W | | |
| Reverse Voltage | V_R | 5 | 5 | 5 | 5 | 5 | 5 | V | |
| Forward Current (avg) | I_F | 30 | 30 | 30 | 30 | 30 | 30 | mA | |
| Forward Current (peak) | I_{FS} | 120 | 125 | 125 | 125 | 125 | 125 | mA | |
| Reverse Current $V_R = 5V$ | I_R | 10 | 10 | 10 | 10 | 10 | 10 | μA | |
| Power Dissipation | P_T | 75 | 78 | 75 | 114 | 108 | 114 | mW | |
| Operating & Storage Temperature | T_A | -40 ~ +85 | | | | | | C° | |
| Forward Voltage (typ) $I_F = 20mA$ | V_F | 2.1 | 2.1 | 2.0 | 3.3 | 3.1 | 3.3 | V | |
| Forward Voltage (max) $I_F = 20mA$ | V_F | 2.6 | 2.6 | 2.5 | 3.8 | 3.6 | 3.8 | V | |
| Wavelength at Peak Emmission $I_F = 20mA$ | λ_P | 660 | 585 | 572 | 460 | 515 | n/a | nm | |
| Spectral Line Half-Width $I_F = 20mA$ | $\Delta\lambda$ | 25 | 37 | 20 | 30 | 33 | n/a | nm | |
| Luminous Intensity, $I_F = 20mA$ | LI | 50 | 10 | 60 | 120 | 700 | 800 | mcd | |
| Viewing Angle | Θ | 120 | 120 | 120 | 120 | 120 | 120 | deg | |