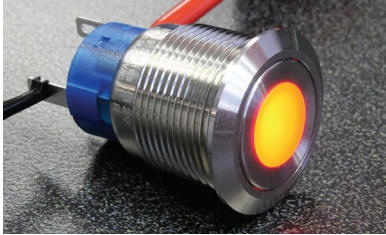


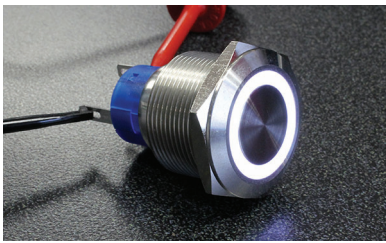
anti-vandal switches



AHU Series

UL Approved
19mm
Momentary or Latching
Panel Mount
IP65 Sealing Degree

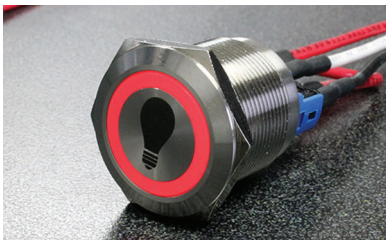
3A @ 125VAC
3A @ 250VAC



DH22U Series

UL Approved
22mm
Momentary or Latching
Panel Mount
IP65 Sealing Degree

3A @ 125VAC
3A @ 250VAC



DH Series

22mm, 25mm, 28mm &
30mm
Momentary or Latching
Panel Mount
IP65 Sealing Degree

2A @ 24VDC
2A @ 125VAC
1A @ 250VAC



AH Series

19mm
Momentary
Panel Mount
IP65 Sealing Degree

1A @ 24VDC
1a @ 125VAC
0.5A @ 250VAC



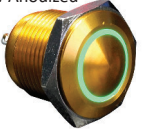
BH Series

16mm & 19mm
Momentary
Panel Mount
IP65 Sealing Degree

2A @ 36VDC
1A @ 125VAC
0.5A @ 250VAC

Center Dot or Ring Illumination
Non-Illuminated Option
Flush Actuator
Stainless Steel or Black Anodized Aluminum Finish
Solder Lug Termination
LED Voltage Options

BH Series Yellow Anodized



AHU Series Non-Illuminated



Ring Illumination
Non-Illuminated Option
Flush Actuator
Solder Lug Termination
LED Voltage Options



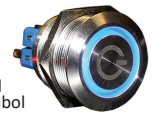
DH22U Series

Center Dot or Ring Illumination
Non-Illuminated Option
Flush or Raised Actuator Options
Universal Standby Symbol Illuminated Option
Stainless Steel, Nickel Plated or Black Anodized Aluminum Finish
Solder Lug Termination
Dual LED Option
LED Voltage Options



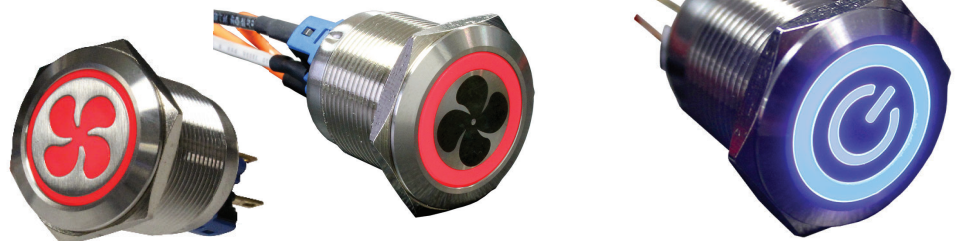
AH Series with mushroom actuator

Center Dot or Ring Illumination
Non-Illuminated Option
Flush or Mushroom Actuator Options
Stainless Steel or Anodized Aluminum Finish
Solder Lug Termination
Dual LED Option
LED Voltage Options



International Standby Symbol

Center Dot or Ring Illumination
Non-Illuminated Option
Flush, Round, or Raised Actuator Options
Nickel Plated, Gold Plated, Brush Stainless Steel, or Anodized Aluminum Finish
Screw Terminals, Solder Lugs or .110 Quick Connect Termination
Dual LED Option



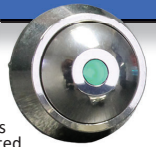


CH Series

16mm
Momentary or Latching
Panel Mount
IP65 Sealing Degree

1A @ 24VDC
1A @ 125VAC
0.5A @ 250VAC

Center Dot or Ring Illumination
Non-Illuminated Option
Flush or Raised Actuator Options
Universal Standby Symbol Illuminated Option
Stainless Steel, Nickel Plated or Black Anodized Aluminum Finish
Solder Lug Termination
Dual LED Option
LED Voltage Options



EH Series
Illuminated



EH Series

12mm
Momentary
Panel Mount
IP65 Sealing Degree

2A @ 48VDC

Center Dot Illumination
Non-Illuminated Option
Cap Color Options
Brushed Stainless Steel or Black Anodized Aluminum Finish
Solder Lug or Screw Termination
Dual LED Option



CH Series
Black Anodized



FH Series

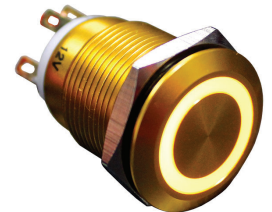
12mm
Momentary
Panel Mount
IP65 Sealing Degree

2A @ 48VDC

Center Dot or Ring Illumination
Non-Illuminated Option
Flush or Raised Actuator Options
Anodized Aluminum Finish
Solder Lug Termination
Dual LED Option
LED Voltage Options



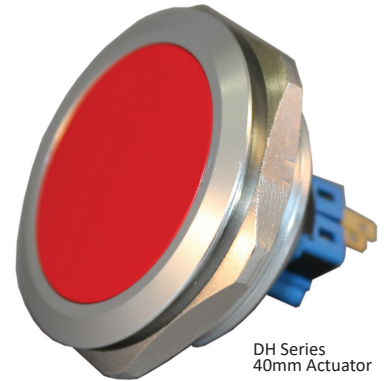
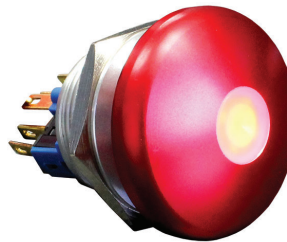
FH Series
Blue Anodized



GH Series

10mm
Momentary or Latching
Panel Mount
IP40 Sealing Degree

Raised Ring Illumination
Raised Non-Illuminated Option
Brushed Stainless Steel or Anodized Aluminum Finish
Solder Lug Termination
Dual LED Option



DH Series
40mm Actuator

CIT Relay & Switch manufactures a broad array of RoHS compliant electromechanical automotive, telecom, security, industrial and HVAC relays and switches.

We thank you for giving CIT Relay & Switch the opportunity to demonstrate why so many are joining our growing list of satisfied customers - customers who have come to rely on the service and quality provided by CIT Relay & Switch.



Division of Circuit Interruption Technology, Inc.

14680 James Road
Rogers, MN 55374 USA
763.535.2339
sales@citrelay.com