

HVAC *relays & switches*

Relay and switches are commonly used in HVAC applications. From motor and fan controls to thermostats, CIT Relay & Switch has a wide variety of relays and switches to suit these products.



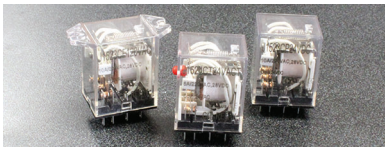
J115F3 Series

The J151 Series is an Ice cube style relay with switching capacity up to 20A. With low coil power consumption and high contact load, the J151 Series has strong resistance to shock and vibration. Contact arrangements include 1A, 2A, 3A, 4A, 1B, 2B, 3B, 4B, 1C, 2C, 3C, and 4C. Coil voltage ranges from 12VDC up to 240VAC with DC coil power options of .90W, 1.4W or 1.5W and AC coil power options of 1.2VA, 2.0VA or 2.5VA. The J151 offers PC pin or solder lug mounting options. Dimensions are dependent upon style choice with a flange option. UL Agency approval is E197852.



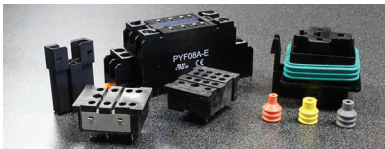
J115F 50amp Series

The J115F 50amp Series relays are economical, offering heavy contact load and strong shock and vibration resistance in a light-weight and small size package. These relays offer 1A, 1B or 1C contact arrangement with coil voltage ranging from 5VDC up to 110VAC with coil power of 1.5W. Dimensions depend upon the style option chosen, including PC pin, low profile and mounting tab versions. UL Agency approval is E19785



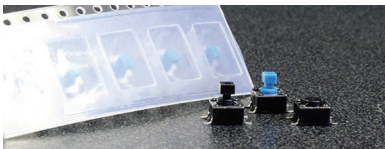
Ice Cube Relays

Ice cube style relays offer switching capacity up to 10A or 20A, depending upon the series chosen. With low coil power consumption and high contact load, the J151 Series and the J152 Series have strong resistance to shock and vibration. Contact arrangements include 1A, 2A, 3A, 4A, 1B, 2B, 3B, 4B, 1C, 2C, 3C, and 4C. Coil voltage ranges from 12VDC up to 240VAC with DC coil power options of .90W, 1.4W or 1.5W and AC coil power options of 1.2VA, 2.0VA or 2.5VA. The J151 offers PC pin or solder lug mounting options. Dimensions are dependent upon style choice with a flange option. UL Agency approval is E197852.



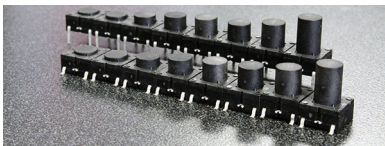
Sockets

We offer relays sockets for a large number of automotive relays and UL approved relays. For use in both PC Pin and Panel Mount & Wire assembly. DIN Rail Mountable and Finger Safe DIN Rail Mountable are also available.



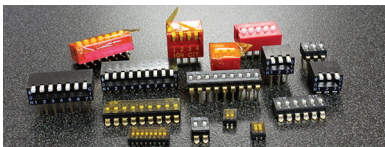
CS1102 Series

The CS1102 tactile switch offers both gull wing and J-lead surface mount termination with a square 6mm body. Momentary with SPST poles, the CS1102 offers actuator lengths ranging from 4.3mm up to 9.5mm with two square head options too. Multiple cap styles in various colors are available, with actuation force options of 100gF, 160gF and 260gF.



ME Series

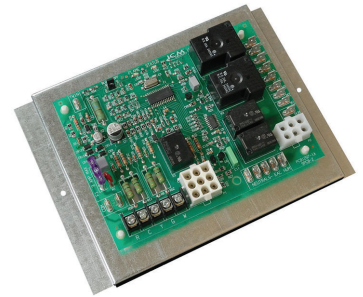
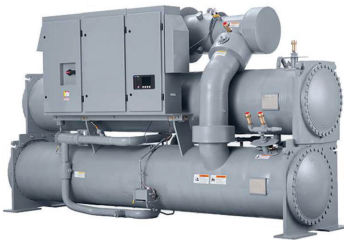
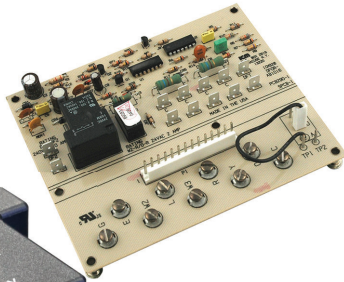
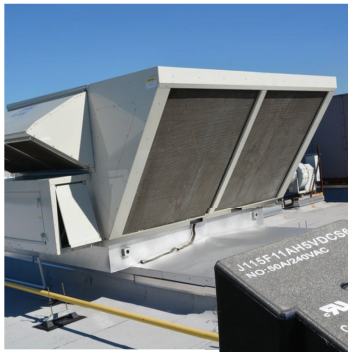
The ME Series is an IP67 process sealed tactile switch offering both through-hole and surface mount options with a 350gF actuation force. With actuator and housing of PA6T Polyamide and silver plated stainless steel dome contact, the ME Series tact switch uses a silicon rubber internal seal providing truly sealed, one piece construction. Actuator color on this process sealed switch is standard black; contact factory for additional color options.



DIP Switches

CIT Relay & Switch offers the low cost K Series family of DIP switches. Offering both extended and recessed actuators, the K Series standard, half pitch, right angle, and low profile DIP switches are available in through-hole, Gull Wing and J Lead termination. Positions range from 01 to 12. Most of the K Series family are compatible with SMT assembly and infrared reflow & automatic wave soldering. Packaging options include tape and reel or tube. Top tape seal is offered with the recessed actuators.





CIT Relay & Switch manufactures a broad array of RoHS compliant electromechanical automotive, telecom, security, industrial and HVAC relays and switches.

Thank you for giving CIT Relay & Switch the opportunity to demonstrate why so many are joining our growing list of satisfied customers — customers who have come to rely on the service and quality provided by CIT Relay & Switch.



14680 James Road
Rogers, MN 55374 USA
763.535.2339
sales@citrelay.com