

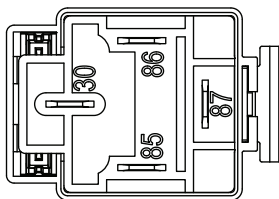
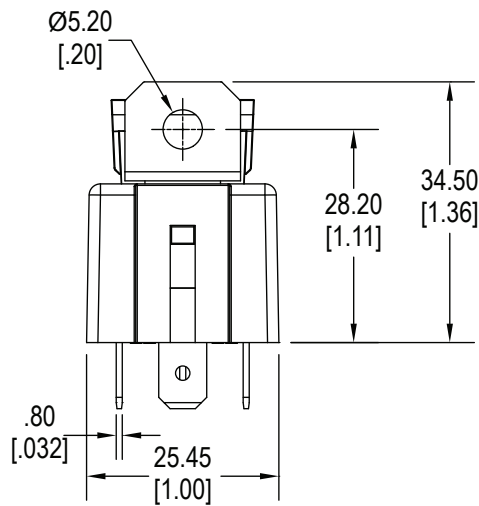
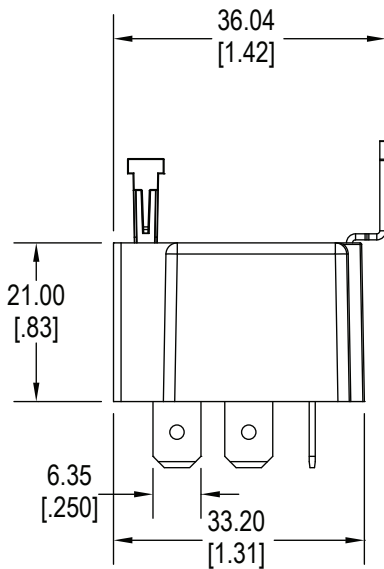


## Ordering Information

1. Series	A9	1A	C	12VDC
2. Contact Arrangement	1A = SPST N.O.			
3. Sealing Option	C = Dust Cover			
4. Coil Voltage	12VDC 24VDC			
5. Fuse Option	30A fuse supplied standard			

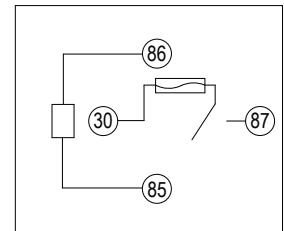
## Dimensions

Units = mm



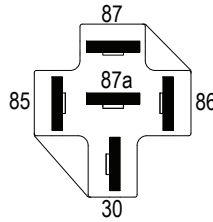
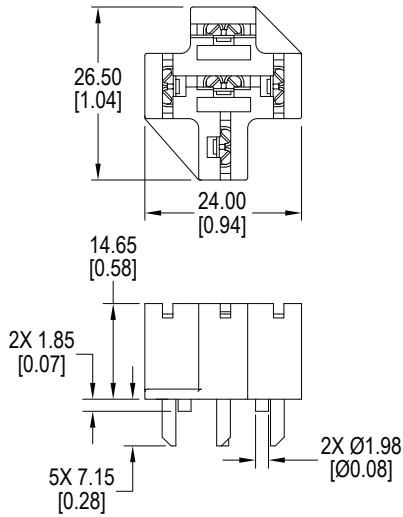
## Schematics

Bottom View

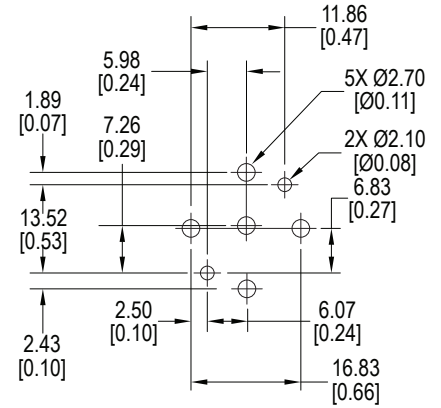


## Sockets Units = mm

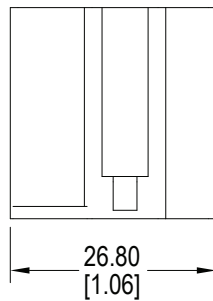
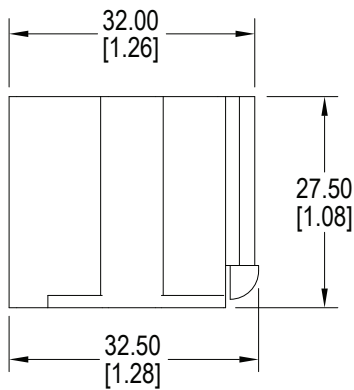
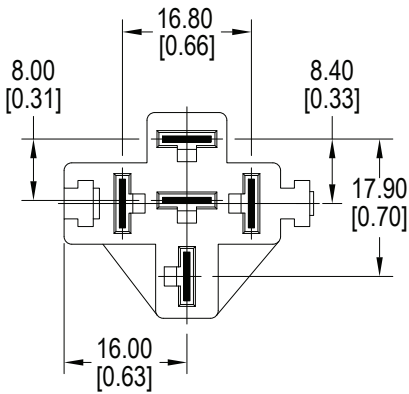
RS2105



Schematic



RS2300



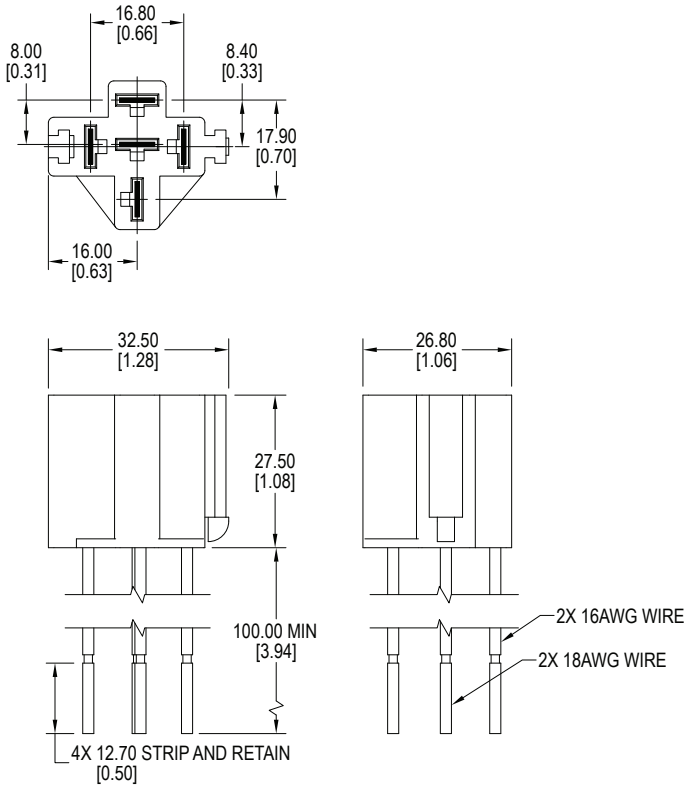
### Metal Crimp Terminal Compatibility

Mfr.	Part Number	Wire AWG	Blade
TE	42100	14-18	1/4"
TE	42281	14-18	1/4"
TE	42904	12-16	1/4"
TE	60249	12-16	1/4"
TE	60253	12-14	1/4"

CIT Relay & Switch references these female quick connect terminals to be used with our automotive sockets. Current capability of the terminals depends on the gauge of the wire used, the quality of the crimp, the addition of solder or a weld, operating conditions, ambient temperature, and so forth. Terminals to be purchased separately from the manufacturer.

**Sockets** Units = mm

RS2314



RS2315

